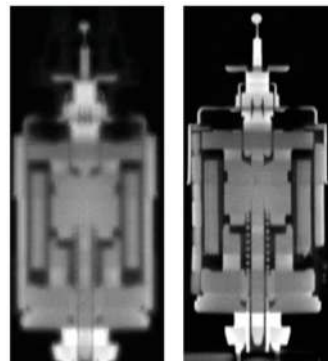


XRS-600



Features and Customer Benefits

- Stepless control of KV and mA
- Easy to install, easy to operate
- Suitable for factory floor application
- Higher penetration shorter exposure times
- Higher resolution by using HP-Technology
- Arc resistant design will increase efficiency
- Arc suppression minimizes the number of restarts



The images above illustrate the superior performance of the HP Technology versus traditional X-Ray. Both images were made using the same power and exposure duration. Due to the smaller focal point of HP Tube, the resolution of the image on the right is clearer and shows far more detail.

TUBE MXR-601HP/11

Ordering No.	915395.51
Nominal tube voltage	600kV
Continuous rating	700 W / 1500W
Focal spot acc. EN 12543	d=0.7 mm / d=2.0 mm
Filament current, max.	3.7 A / 4.1 A
Filament voltage, typical	2.0V / 4.9V
Inherent filtration	5 mm Be
Target material	W
Target angle	11°
Radiation coverage	40° x 30°
Leakage radiation, max.	5 mSv/h
Cooling medium	Oil
Cooling medium flow, min.	14l/min
Temperature at inlet, max.	50°C
Weight	ca. 145 kg
Terminal type	R30
Mounting flange	4512-104-87431

CABLE

Type	Ordering No.	Type	Ordering No.
F3/300-R30-R30-5m		XRC-4501-OW	10008643
		XRC-4501-OA	10008642

COOLER

Type	Ordering No.
XRC-4501-OW	10008643
XRC-4501-OA	10008642

GENERATOR XRP-600/4500/2

Ordering No.	20033926
Voltage range	20 – 600
Adjustment increments (minimum step)	0.2kV increments
Accuracy	<+/-1 %
Reproducibility (at constant temperature)	<+/-0.01 %
High voltage ripple (with 10m high voltage cable)	10V/mA, min 40 V
temperature induced drift	80 ppm/°C
Current range	0 – 10 mA
Adjustment standard range	0.05mA increments
High resolution range (recommended)	0.01 mA steps
Accuracy (at constant temperature)	<+/-0.2% of demand value <+/-0.01% mA
Reproducibility (at constant temperature)	2uA
Temperature induced drift	50 ppm/°C
Maximum power	4500W
High voltage connector type	R30
Control Unit	XRG-600
Dimensions (W x H x D) mm	483 mm x 133 mm x 300 mm
Weight	12.5 kg
Power Supply	XRP-Power-600
Dimensions (W x H x D) mm	340 mm x 350 mm x 628 mm
Weight	45 kg
High Voltage Tank (Oil Insulated)	XRP-T300K/XRP-T600A
Dimensions (W x H x D) mm	950 mm x 510 mm x 557 mm 950 mm x 417 mm x 557 mm
Weight	180 kg

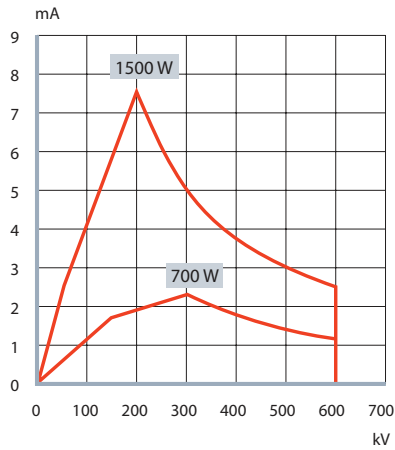


Technology with Passion

COMET AG, Herrengasse 10, CH-3175 Flamatt
 T +41 31 744 90 00, F +41 31 744 90 90
 info@comet-xray.com, www.comet-xray.com

Power ratings Diagram

Power rating at given filament current



Drawings

